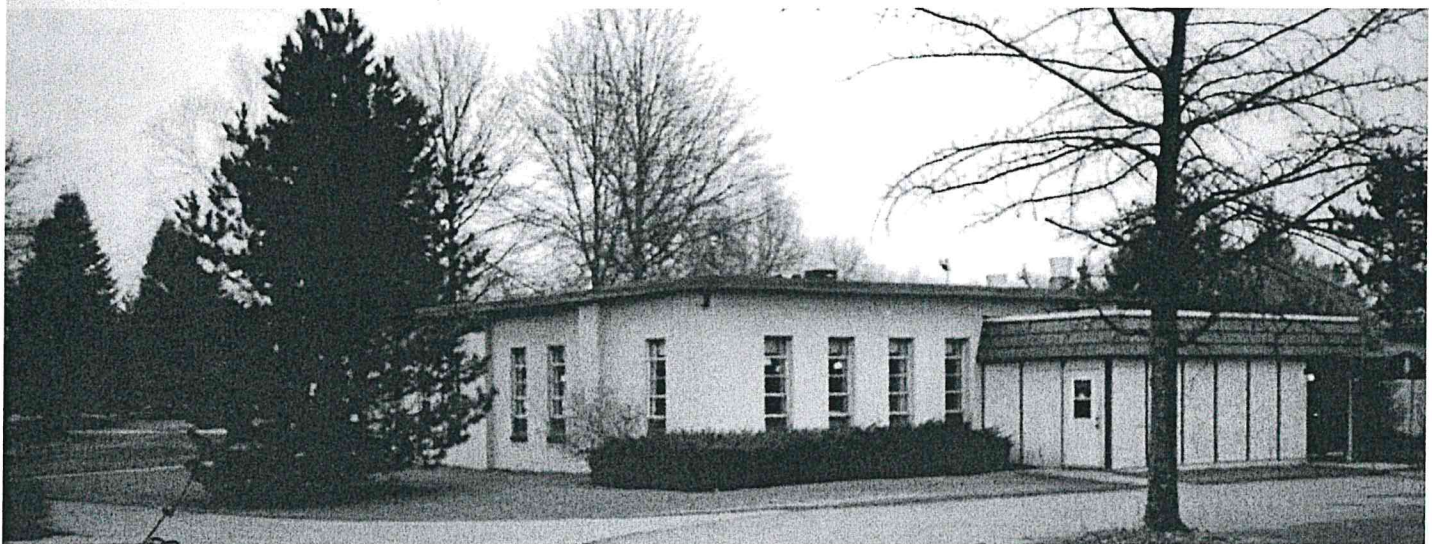
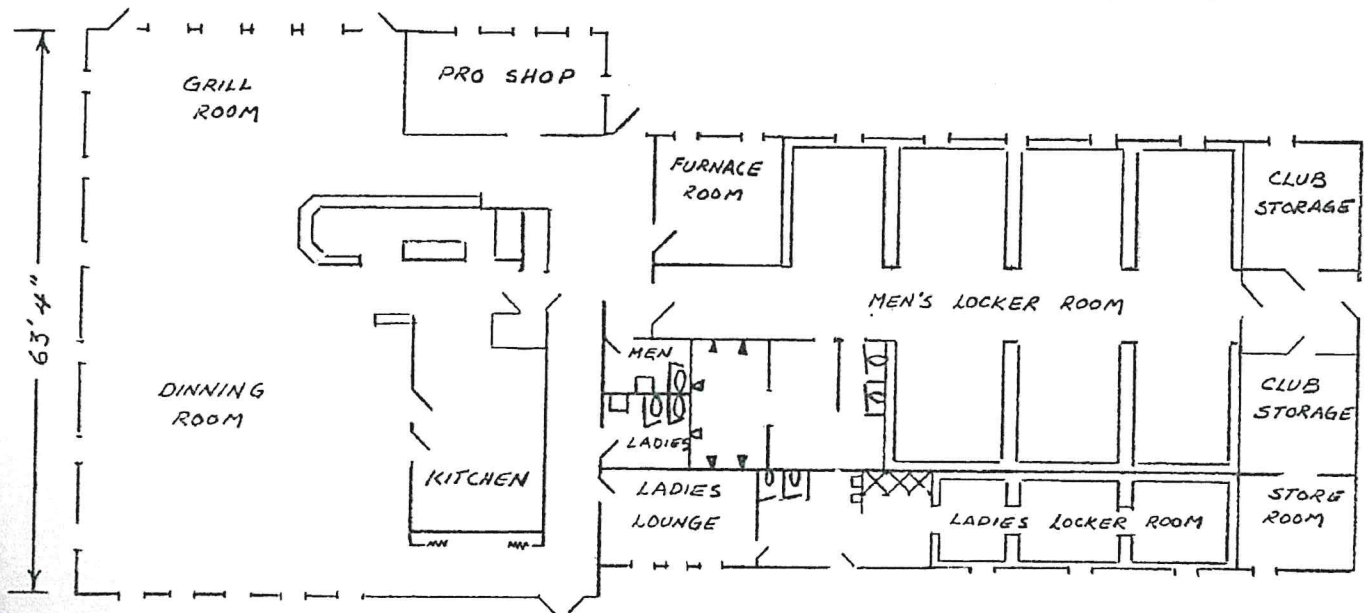




April 8, 1965 : Cement Block walls nearing completion and steel for the roof was delivered.

August 1, 1965 : Appears to be the date the door will open for the first time. Official opening ceremonies will be August 14, 1965.

NEW CLUBHOUSE FLOOR PLAN





August 15, 1965 : at 9am a dedication ceremony was held to officially open the new clubhouse and the new nine holes. That evening a dinner and dance was attended by over 300 members and guests. Head golf pro Ange Alberico shot and opening day course record of one under par 70

AUGUST 12, 1965
 FIRST ROUND PLAYED WHEN SPRINGVILLE
 COUNTRY CLUB BECAME 18 HOLES

MEN'S TEES	373	488	167	361	138	339	304	399	372	2941	351	477	120	522	336	335	175	515	173	3004	5945	COURSE RATING	
MEN'S HDCP.	5	1	15	9	17	11	13	3	7		8	6	18	2	10	12	14	4	16				
MEN'S PAR	4	5	3	4	3	4	4	4	4	35	4	5	3	5	4	4	3	5	3	36			
<i>C. Cunningham</i>	4	5	3	5	3	5	4	5	4	38	5	5	5	6	4	5	4	6	3	42	80		
<i>B. Lowe</i>	4	5	4	5	3	5	4	5	5	40	4	6	3	6	4	5	4	5	3	41	81		
POINTS OR BEST BALL WON+ LOST-																							
HOLE	1	2	3	4	5	6	7	8	9	OUT	10	11	12	13	14	15	16	17	18	IN	Total		
<i>Ange Alberico</i>	5	4	3	4	2	4	4	4	4	34	4	4	2	5	5	4	4	4	4	36	70		
<i>Tom Hughes</i>	6	7	4	4	3	4	5	5	5	43	4	6	4	6	5	4	3	6	2	40	83		
POINTS OR BEST BALL WON+ LOST-																							
WOMEN'S PAR	4	5	3	4	3	4	4	4	4	35	4	4	3	5	4	4	3	5	3	36			
WOMEN'S HDCP.	3	1	15	7	17	11	9	13	5		12	6	16	4	8	10	14	2	18				
WOMEN'S TEES	373	445	167	321	138	269	304	267	372	2656	295	407	120	422	336	334	175	428	173	2690	5346	COURSE RATING	

SCORER *Tom Hughes*
 ATTEST *B. Lowe*
 DATE *8/12/1965*

Springville
 Country
 Club

